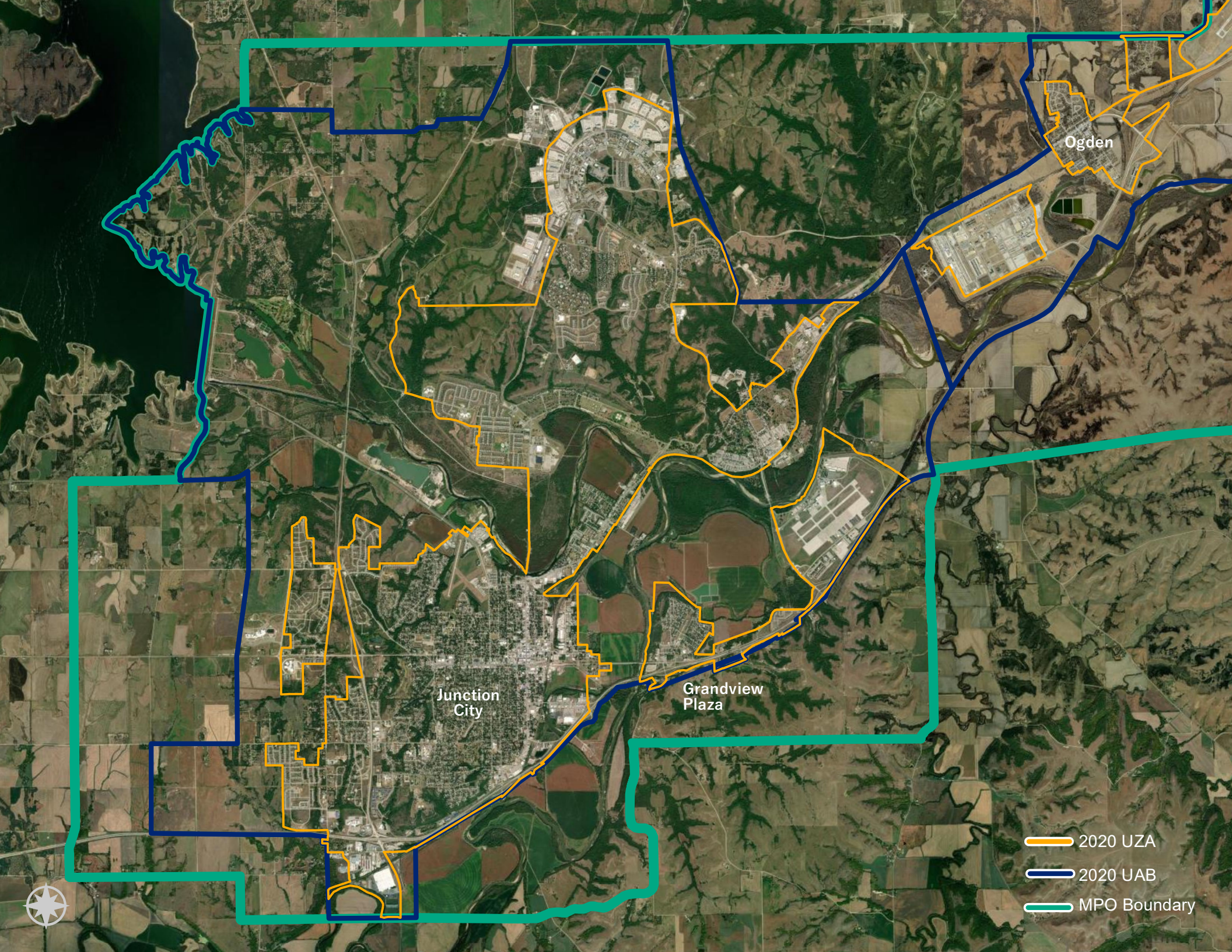


Junction
City

Manhattan

Wamego

- 2020 UZA
- 2020 UAB
- MPO Boundary



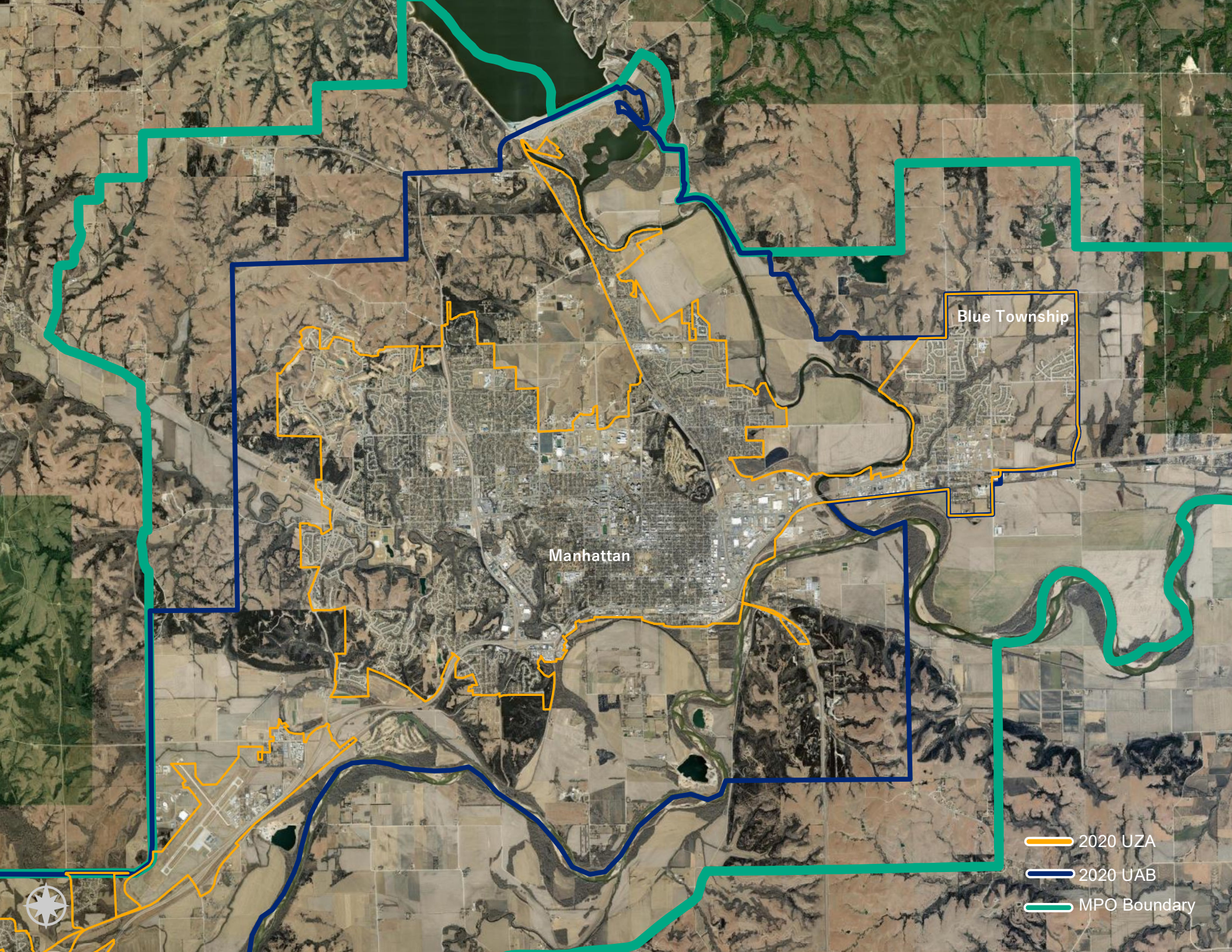
Ogden

Junction City

Grandview Plaza

- 2020 UZA
- 2020 UAB
- MPO Boundary



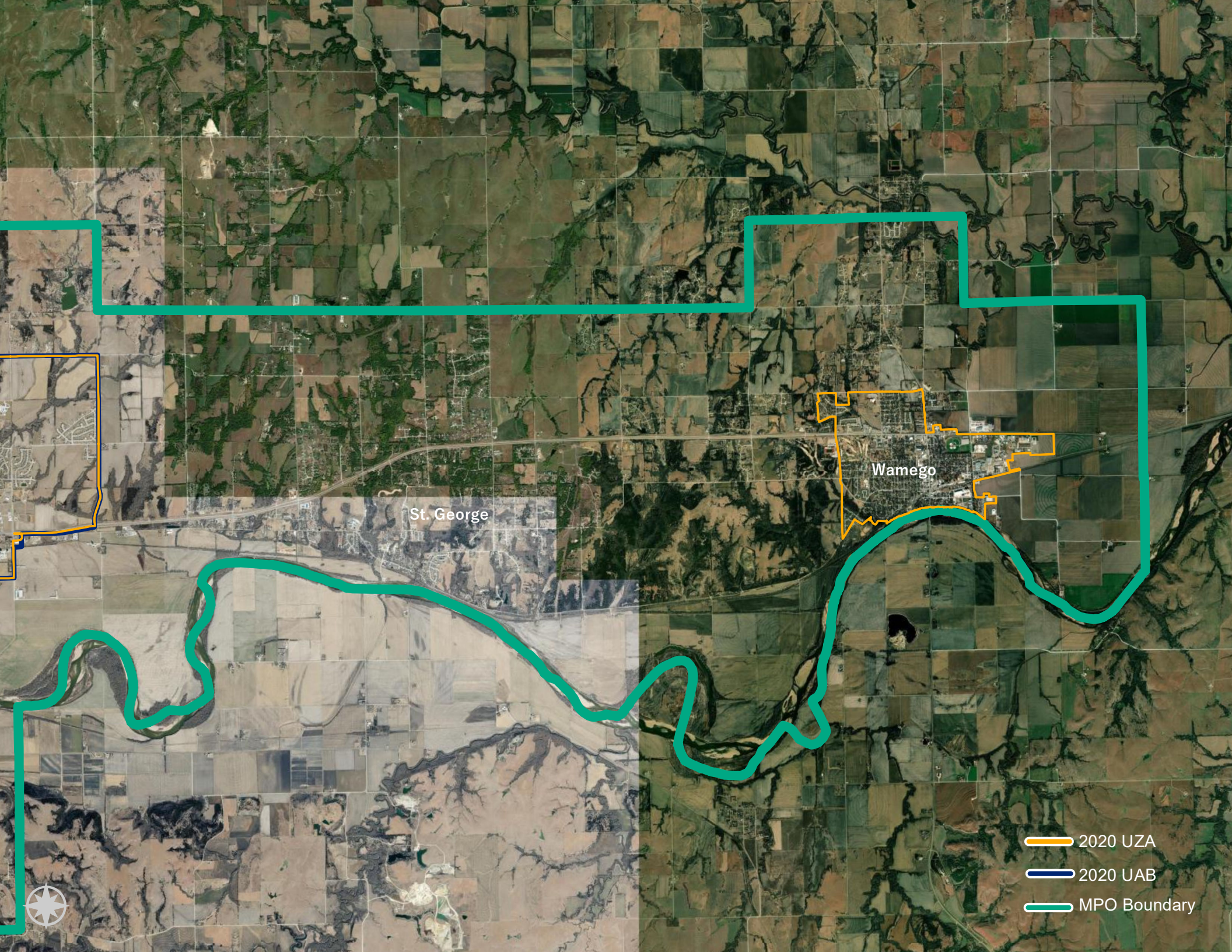


Manhattan

Blue Township

- 2020 UZA
- 2020 UAB
- MPO Boundary





St. George

Wamego

- 2020 UZA
- 2020 UAB
- MPO Boundary



MPO Boundary:

Starting at the far NE corner of the MPO Boundary in Pottawatomie County:

1. Beginning at the NE corner of Section 35, Township 9S, Range 10E,
2. then due south along eastern section line until it intersects with the county line;
3. then following the county line to the west until it intersects with eastern edge of S22-T10S-R8E;
4. then south along the section line until the southern boundary of S34-T10S-R8E;
5. then head due west along the section line until it intersects with McDowell Creek Rd;
6. then southwest following McDowell Creek Rd until it intersects with the southern right-of-way of I-70;
7. then follows I-70 to the west until it intersects with Clarks Creek Rd;
8. then heads south along Clark Creek Rd until it intersects with the southern boundary of S10-T12S-R6E;
9. then heads due west along the section line until it intersects with Hill Rd;
10. then heads south along Hill Rd until road intersects with the southern boundary of S24-T12S-R5E;
11. then continues west along the section line until the SW corner of S21-T12S-R5E;
12. then head due north until the section line intersects with Old Highway 40;
13. continue along Old Highway 40 until the intersection with Crider Rd;
14. the north along Crider Rd until the intersection of K-244;
15. then east along K-244 to the K-244 spur;
16. then north on the K-244 spur to the junction of K-57;
17. then north on K-57 to where K-57 intersects with S17-T11S-R5E;
18. then southwest along the southern boundary of said section to where it intersects with the eastern edge of the Milford Lake boundary;
19. continuing north along the Milford Lake boundary until even with the Lakeview Terrace;
20. then extending due east from the Lake boundary on the same alignment as Lakeview Terrace to the intersection of Lakeview Terrace and Budden Rd;
21. then north along Budden Rd to where it intersects with the southern boundary of S32-T10S-R5E;
22. then east along the section lines for approximately 10.8 miles until the section line interest with Wildcat Creek Road;
23. then north, following Wildcat Creek Road/section line, continuing along the section line when Wildcat Creek Rd jogs east until Wildcat Creek and the section line intersect;
24. then resumes following Wildcat Creek Rd as it jogs west until it intersects with the section line again (to ensure that Wildcat Creek Road is encompassed into the MPA boundary);
25. then north along the section line until it intersects with the terminus of W 62nd Ave;
26. then north, following W 62nd Ave until it intersects with Anderson Ave;
27. then northwest along Anderson Ave until it intersects with W 69th Ave;
28. then north following 69th Ave as it turns east and changes to Whites Rd;
29. then east along Whites Rd, continuing north as it turns into W 59th Ave;
30. continuing north along W 59th Ave until it intersects with N 48th St;
31. then due east, to the western boundary of S22-T9S-R7E, following the half-section line;
32. then north along the section line to the north boundary of the same section;
33. then east along the northern section line until the terminus of that section;
34. then north along the western boundary of S14-T9S-R7E;
35. then east along the northern boundary of said section until it intersects with the county line;
36. then southeast, following the county line until it intersects with K-13;

37. then northeast along the northern ROW of K-13 until it intersects with Dyer Rd;
38. then south along Dyer Rd until it intersects with Rocky Lane Rd;
39. then east along Rocky Lane Rd until it intersects with Cedar Creek Rd;
40. then south along Cedar Creek Rd, continuing south following the two-track road to Blue River Rd.;
41. then along Blue River Rd where it heads due east along the northern section line of S32-T9S-R8E;
42. then continuing along the section line for approximately two miles until the western boundary of S-27-T9S-R8E;
43. then north for one mile;
44. then east along the northern section line of the same section for two miles;
45. then south along Lake Elbow Rd. for one mile;
46. then east along the section line which is on the same alignment as Walker Rd and Elm Slough Rd;
47. continuing until it intersects with Salzar Rd;
48. then north along Salzar to Cannonball Rd;
49. then east along Cannonball Rd, following the section line when the road terminates for a half mile to the western edge of S27-T9S-R10E;
50. then south along the western section line for one mile;
51. then east along the same section for two miles until the point of beginning.

UAB - Manhattan, KS 2020

1. Beginning on the southern K-18 right-of-way where it intersects Whiskey Lake Rd;
2. Then northwest to the intersection of Huebner Rd and Williston Pointe Rd;
3. Then northeast along Huebner Rd to the City of Ogden boundary;
4. then northwest to the intersection of Mallon Rd and Harris Rd;
5. then north along Mallon Rd to Vinton School Rd;
6. then east along Vinton School Rd to the southwest corner of Section 31, T10S, R7E;
7. then east along the section line to where it intersects Wildcat Creek Rd;
8. then north along Wildcat Creek Rd to the northwest corner of Section 20, T10S, R7E;
9. then east along the section line to the southwest corner of Section 16, T10S, R7E;
10. then north along the section line, continuing for approximately 4 miles to the northwest corner of Section 33, T9S, R7E;
11. then east along the section line, continuing for approximately 2 miles to the southwest corner of Section 26, T9S, R7E;
12. then north along the section line to US-24 (Tuttle Creek Blvd);
13. then east on US-24 to the intersection with K-13;
14. then north and east along K-13 to River Pond Rd;
15. then following River Pond Rd to the park entrance;
16. then south through the park permit station to Beach Drive;
17. then southeasterly on Beach Drive to the connection with Dyer Road (approximately 1 mile south of the K-13 Dyer Road Intersection);
18. then south along Dyer Road to Rocky Lane;
19. then east along Rocky Lane to the intersection with Cedar Creek Rd;
20. then south along Cedar Creek Rd approximately 0.38 miles;
21. then south along the west bank of Cedar Creek to Blue River Rd;
22. then southeasterly on Blue River Road to Junietta;
23. then east on Junietta to Green Valley Rd;
24. then north on Green Valley Rd 0.50 miles (parallel with Mt. Zion Rd);
25. then east, and continuing on Mt. Zion Rd to Lake Elbo Rd;
26. then south on Lake Elbo Rd to the EB lanes of US-24;
27. then west on US-24 approximately 0.84 miles (or approximately 0.10 miles east of Excel Rd);
28. then south to the UP Railroad;
29. then west to Excel Rd;
30. then south along Excel Rd to the intersection with Fielding Rd;
31. then west along Fielding Rd to the intersection with Dempsey Road/Green Valley Road;
32. then north along Green Valley Rd to the railbed;
33. then westerly along the railbed to the Big Blue River;
34. then southeasterly along the river to the Kansas River;
35. then easterly along the river to the east boundary of Section 16, T10S, R8E;
36. then south along said section line to the southeast corner of Section 28, T10S, R8E;;
37. then west along said section line to the Kansas River;

38. then westerly upstream along the Kansas River to a point on the river perpendicular to the northeast corner of Ft. Riley property along K-18 just north of 12th Street;
39. then northwesterly to the east boundary of K-18 right-of-way;
40. then southwesterly to the point of beginning.