

*KS*

# 2019

in Motion

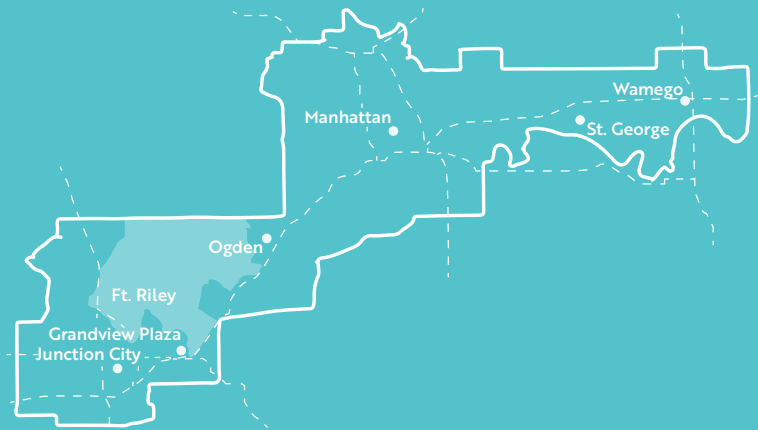
2019 Annual Report

Flint Hills  
  
MPO

# Who We Are

The Flint Hills Metropolitan Planning Organization (MPO) is the designated entity to provide regional transportation planning and programming services across portions of Geary, Pottawatomie, and Riley Counties.

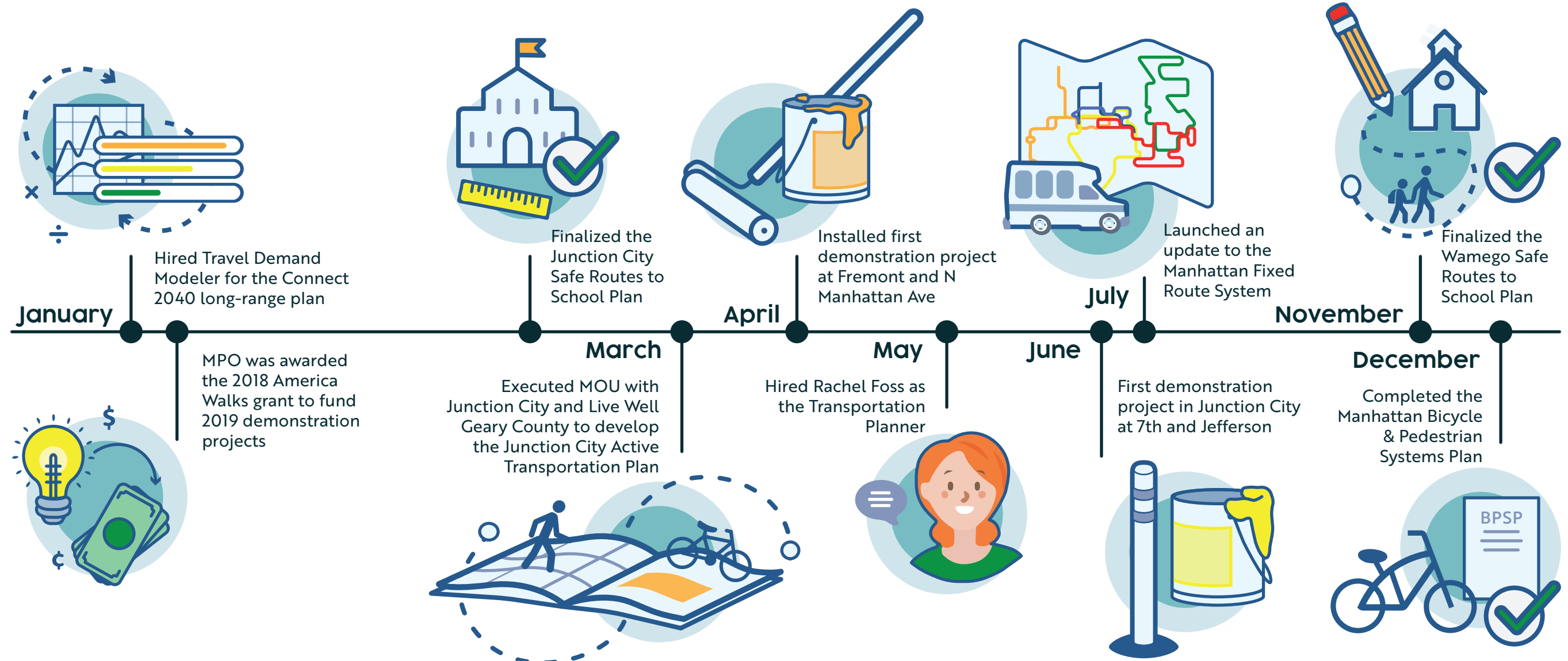
At both the local and regional scale, the MPO places special emphasis on providing equal access to a variety of transportation modes; including, transit, bicycling, walking, vehicles, and freight.

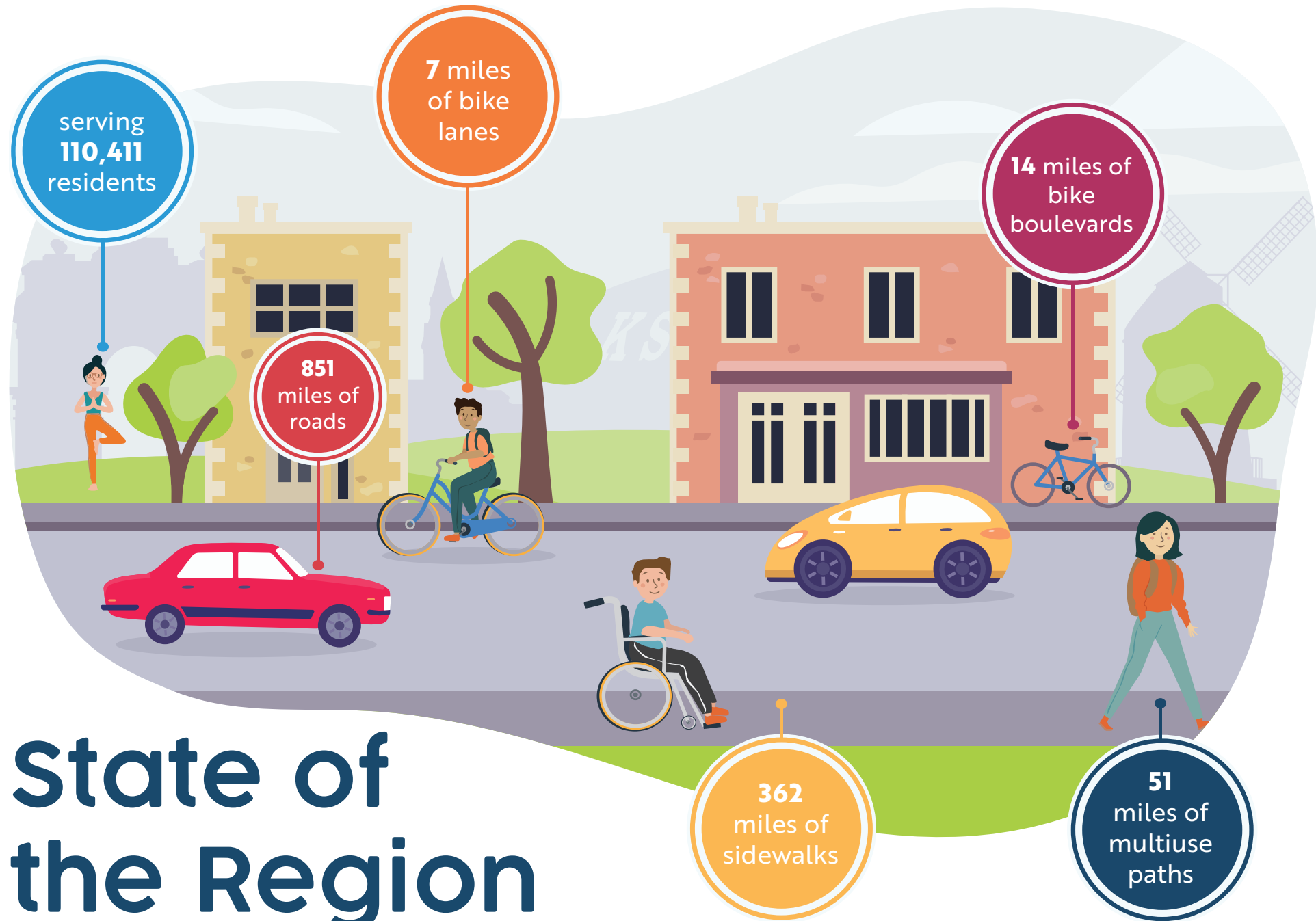


## Our Mission

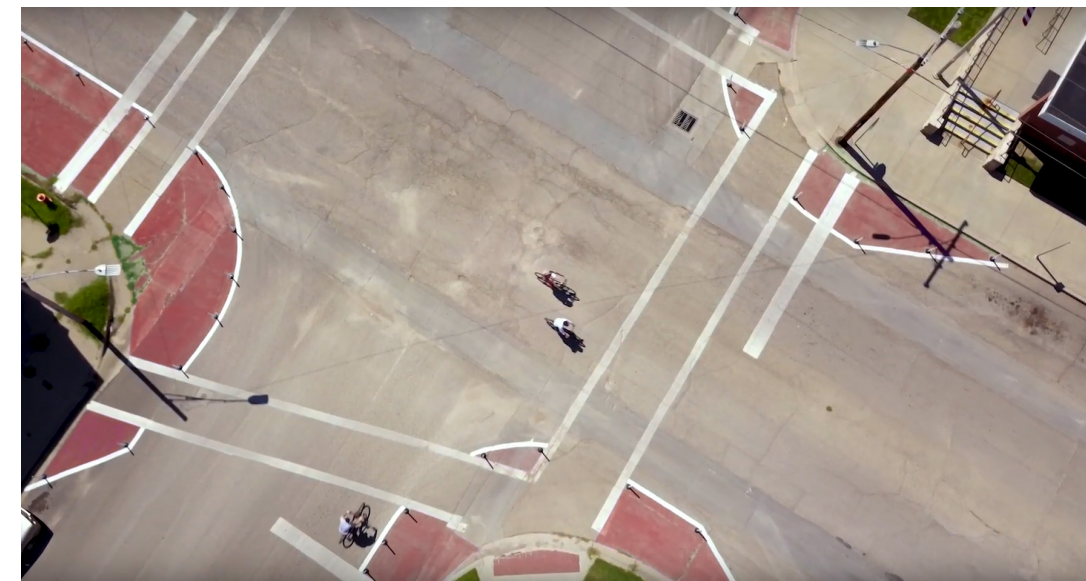
Providing a **regional forum** to coordinate, encourage, and promote a **safe, efficient, affordable, and integrated** transportation system for all users; in support of **livable communities and economic competitiveness**.

# 2019 Highlights





# 2019 Projects

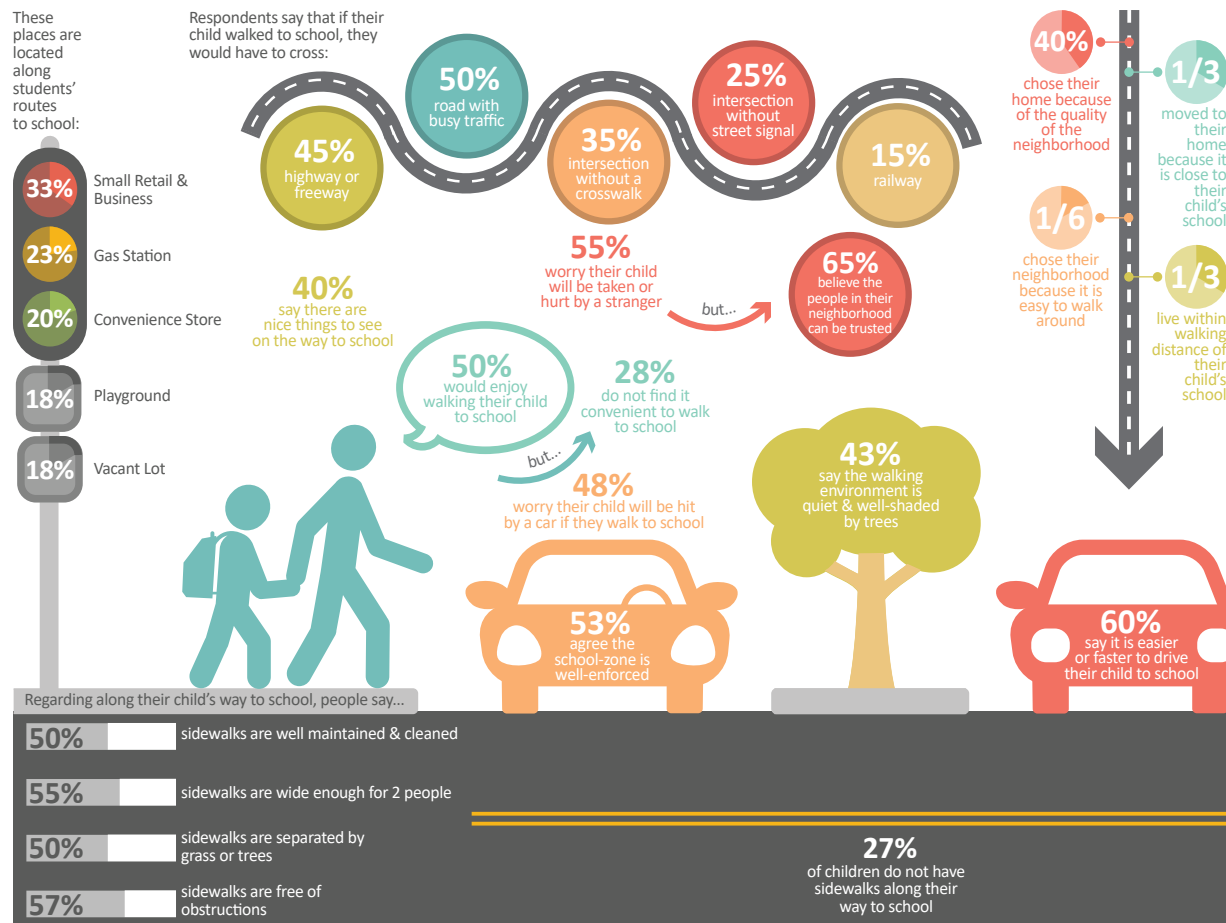


## Demonstration Projects

April 2019 - December 2019

The MPO utilized demonstration projects as a new and innovative way to engage the public for the development of both the City of Manhattan's *Bicycle and Pedestrian Systems Plan* and the *Junction City Active Transportation Plan*. The demonstration projects allowed for **temporary**, **inexpensive**, and **interactive** modifications to the roadway to improve safety for all users. This is an effective way for people to experience and visualize many of the improvements and projects identified in these documents.

Top: Fremont & N Manhattan demonstration, Manhattan  
 Bottom: 7th & Adams demonstration, Junction City



## Wamego Safe Routes to School Plan

January 2018 - December 2019

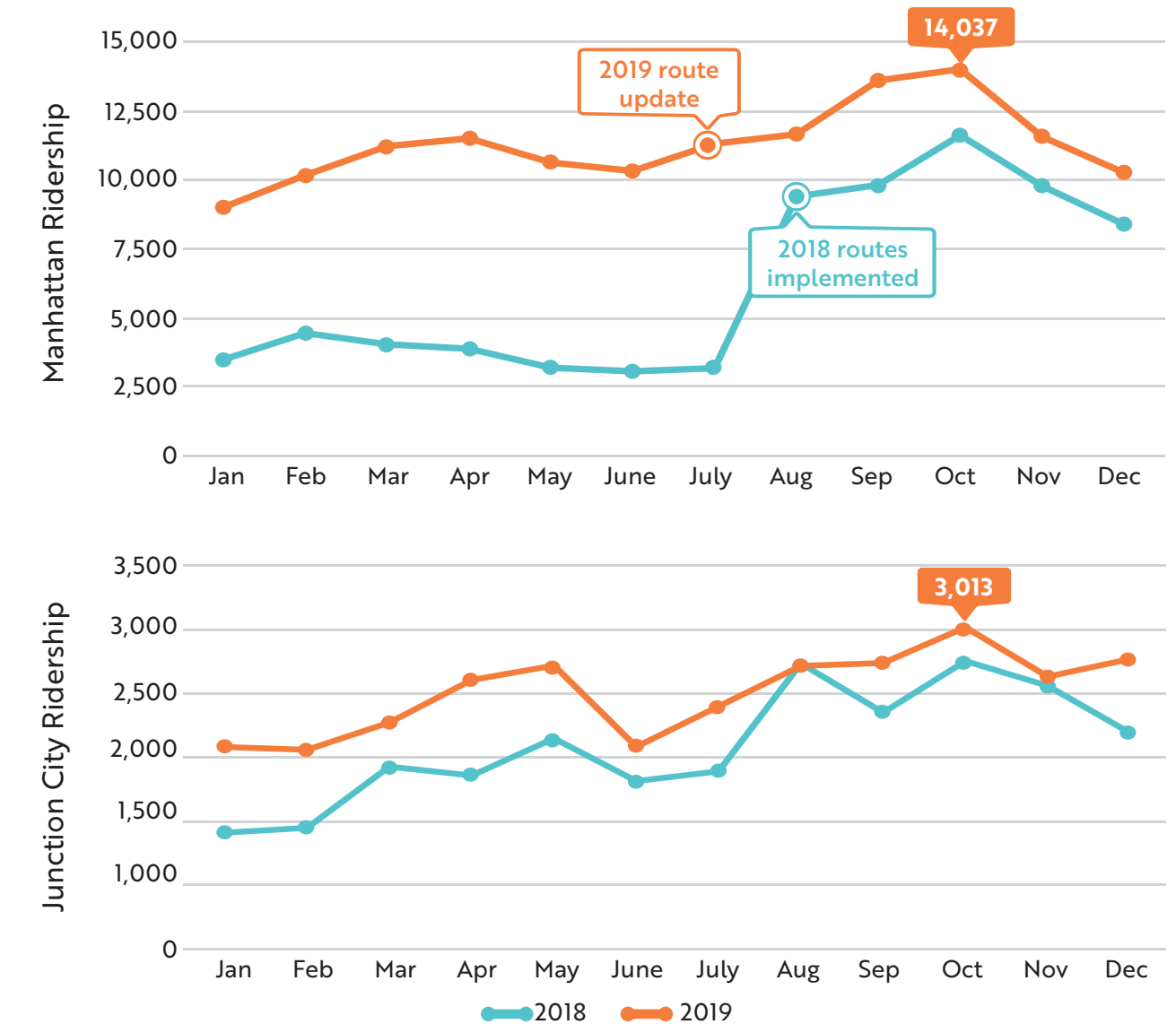
Safe Routes to School (SRTS) is a federal program aimed at improving a child's ability to walk or bike to school. Having a SRTS Plan allows the City of Wamego and USD 320 to access funding through KDOT for projects identified in the Plan. SRTS goes beyond engineering and looks to improve walking and biking to school through the 5-Es.



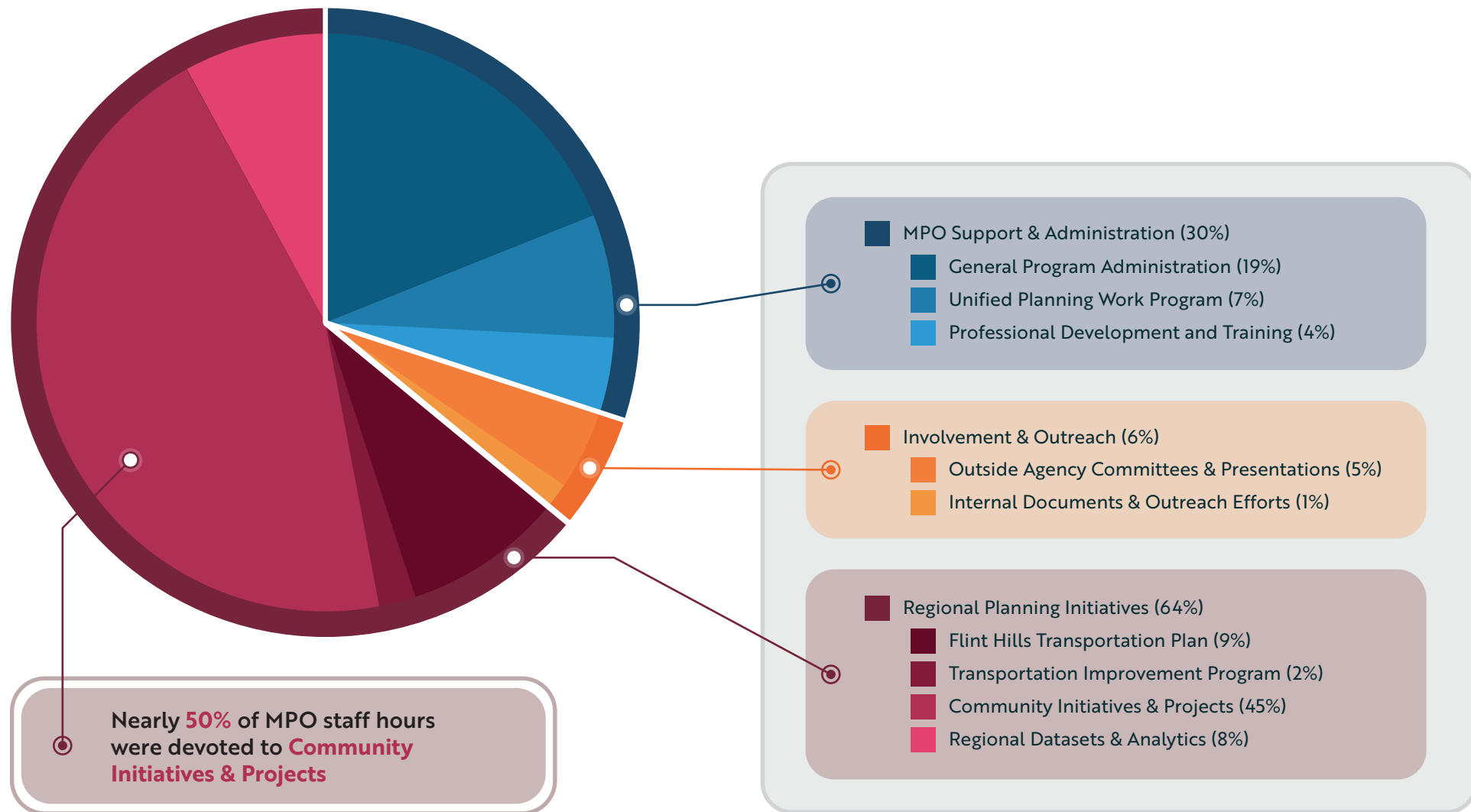
## Flint Hills aTa Bus Updates

In October 2019, aTa Bus had record high ridership in Manhattan and Junction City. Manhattan's increase is mostly attributed to route updates made in July. Junction City's ridership increases can be credited to the partnership created between USD 475 and aTa Bus, allowing all Junction City Middle and High School students to ride the bus for free.

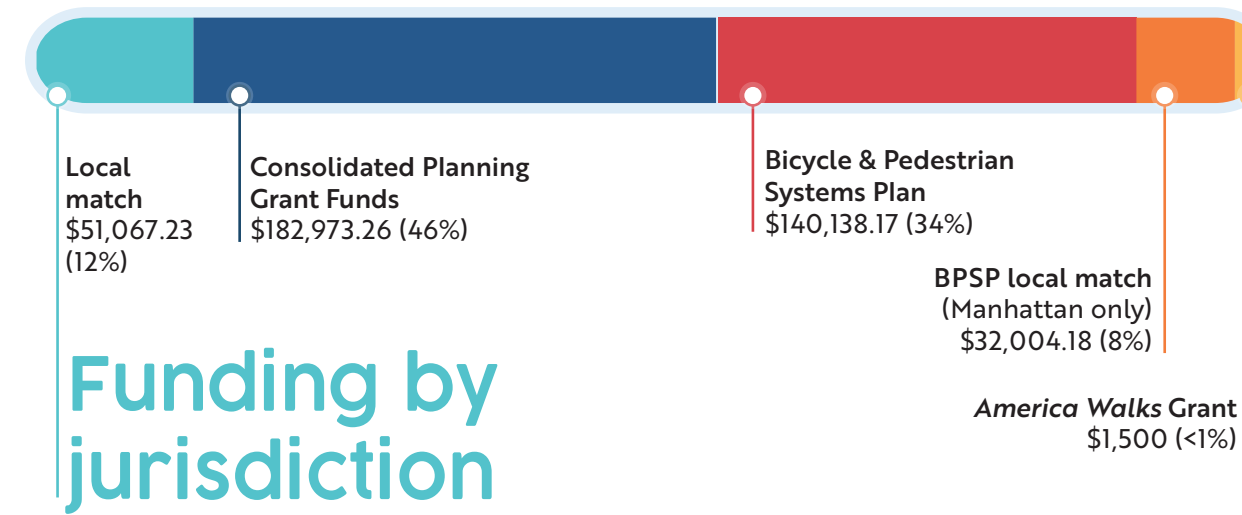
**Ride FREE with your JCHS & JCMS ID**  
Any bus. Any route. Any time.



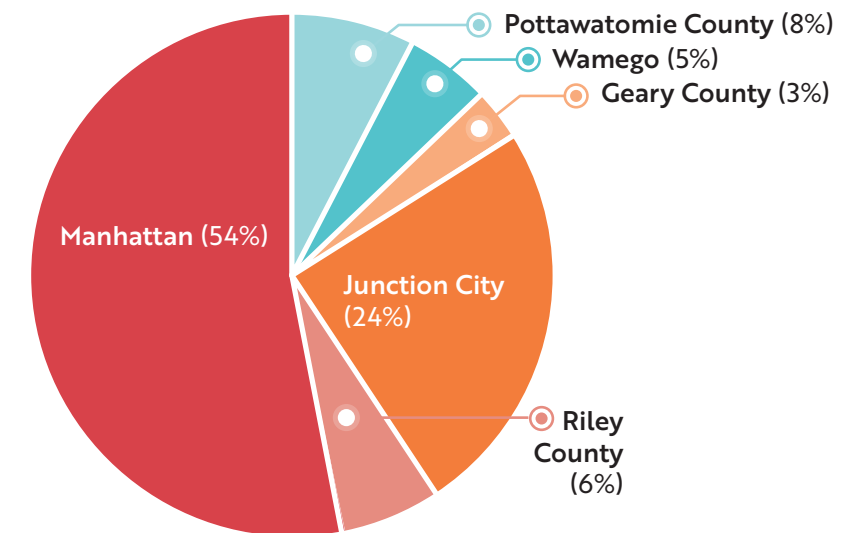
# 2019 Staff Hours



# 2019 Funding



## Funding by jurisdiction



## Cost-sharing partnerships

The MPO received a competitive grant from KDOT to develop the Bicycle and Pedestrian System Plan. MPO staff assisted with the development of the plan, billing time to the project.

The MPO provides transit planning services for aTa Bus. In some instances, some of our work ventures more towards implementation, so those hours are billed directly to aTa Bus.

**These opportunities and partnerships saved the MPO \$17,241.12 in 2019.**