

SAFETY PERFORMANCE MEASURES: 2021



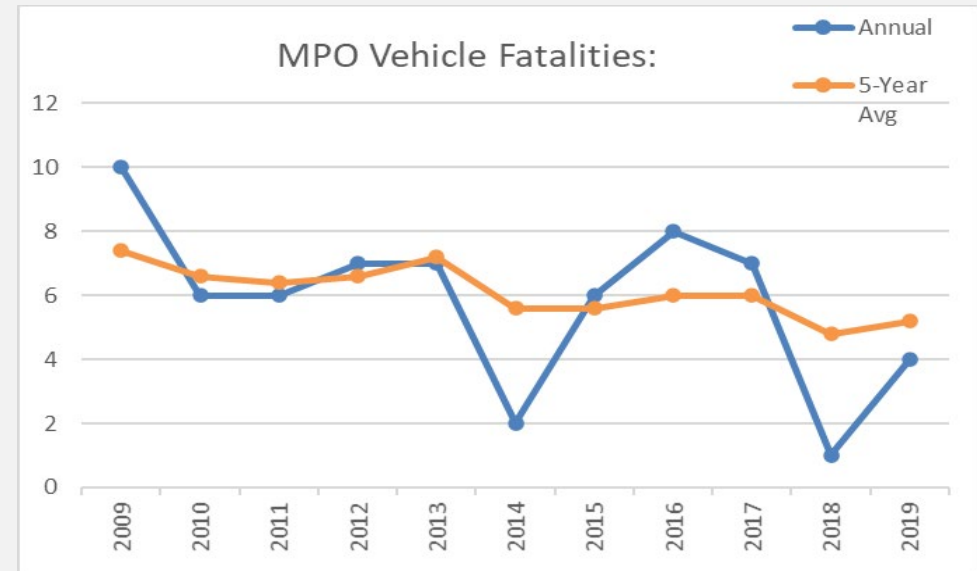
FHWA'S 5 SAFETY PERFORMANCE MEASURES

Regional 5-Year Rolling Averages of:

- 1 Number of Fatalities
- 2 Rate of Fatalities per 100 million VMT (Vehicle Miles Traveled)
- 3 Number of Serious Injuries
- 4 Rate of Serious Injuries per 100 million VMT
- 5 Number of Non-motorized Fatalities & Non-motorized Serious Injuries

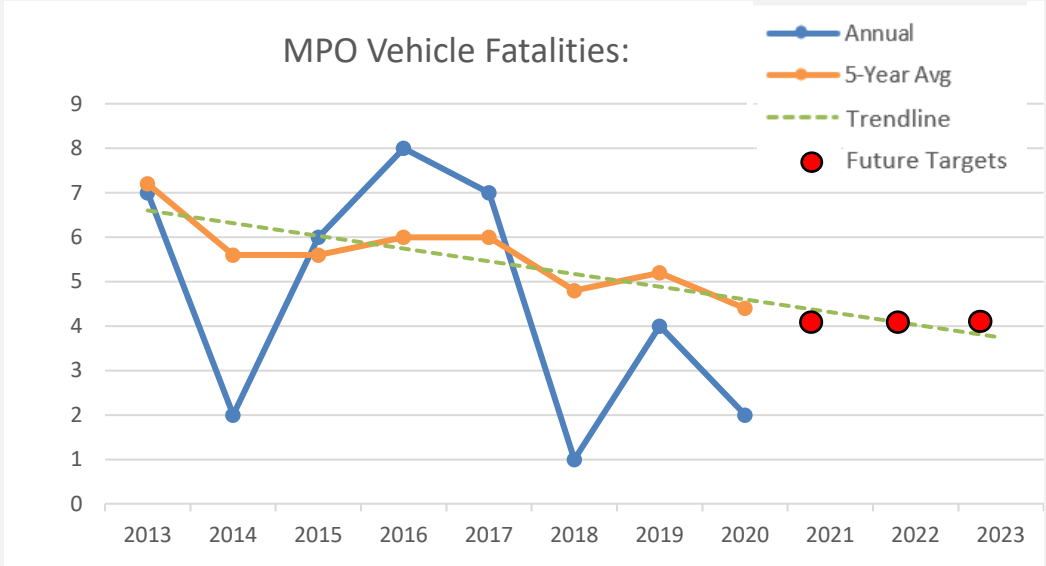
TARGET 1: # OF VEHICLE FATALITIES

Year	Annual Fatalities	5-Year Avg
2009	10	7.4
2010	6	6.6
2011	6	6.4
2012	7	6.6
2013	7	7.2
2014	2	5.6
2015	6	5.6
2016	8	6
2017	7	6
2018	1	4.8
2019	4	5.2
2020	2	4.4



TARGET ①: # OF VEHICLE FATALITIES

Year	Annual Fatalities	5-Year Avg	Target
2013	7	7.2	-
2014	2	5.6	-
2015	6	5.6	-
2016	8	6	-
2017	7	6	-
2018	1	4.8	5
2019	4	5.2	5
2020	2	4.4	4
2021	-	-	5
2022	-	-	4
2023	-	-	4
2024	-	-	4

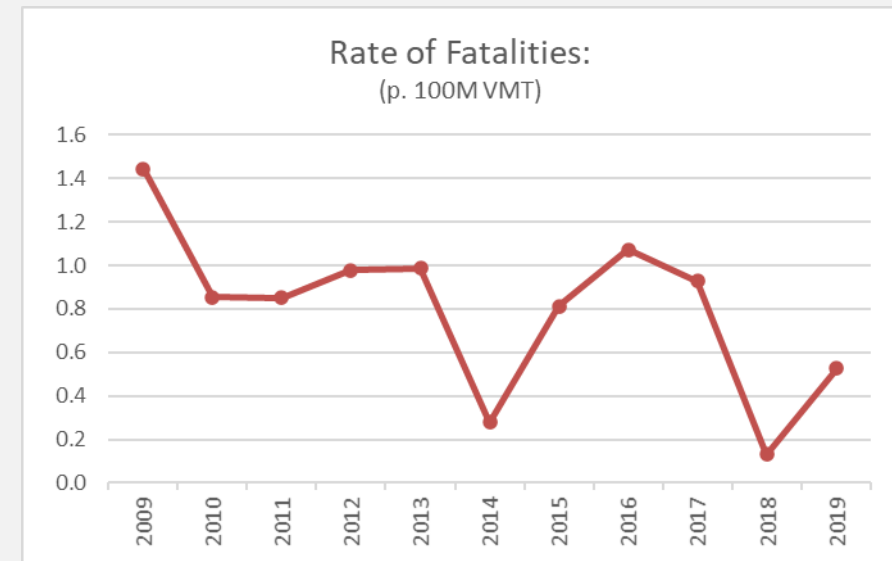
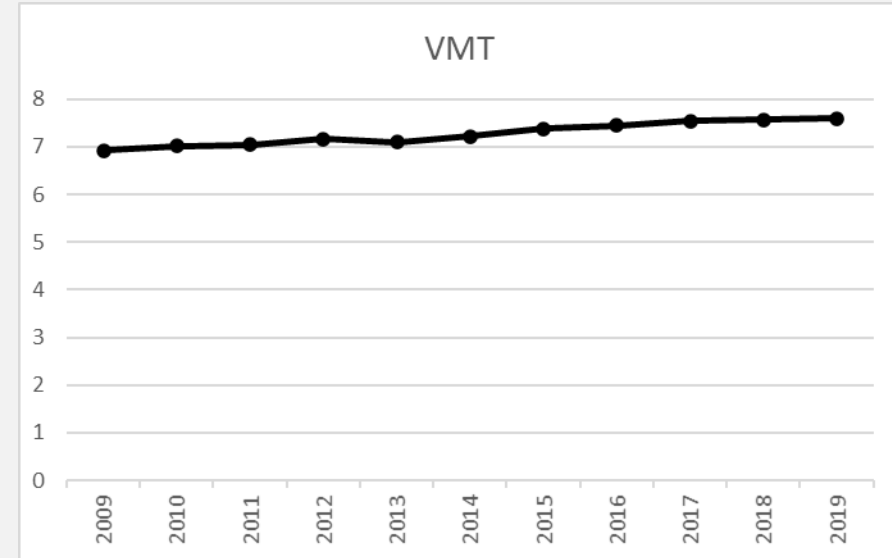


Off Target




TARGET 2: RATE OF VEHICLE FATALITIES P. 100M VMT

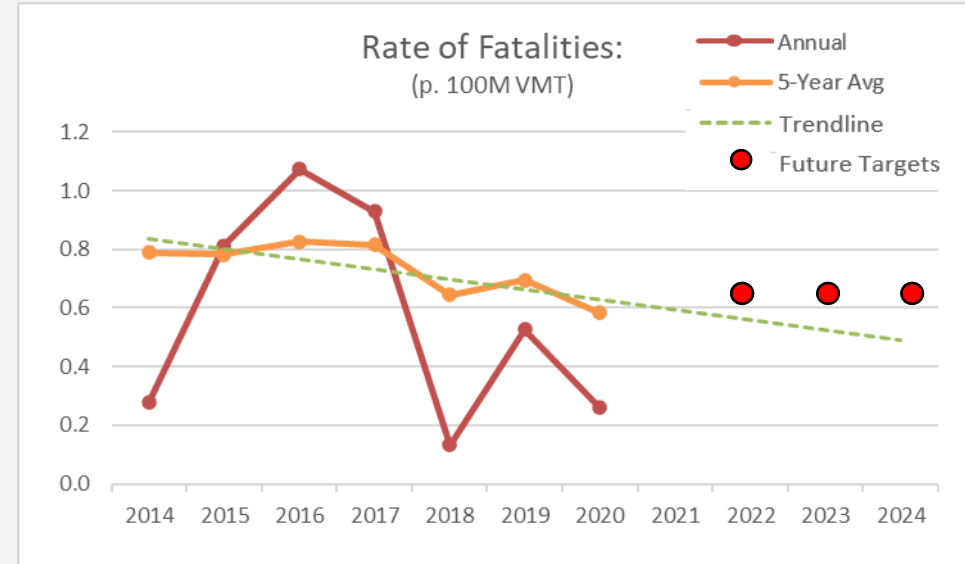
Year	Annual Fatalities	100M VMT	Fatality Rate p/100M VMT
2009	10	6.92	1.44
2010	6	7.02	0.85
2011	6	7.05	0.85
2012	7	7.16	0.98
2013	7	7.09	0.99
2014	2	7.21	0.28
2015	6	7.38	0.81
2016	8	7.45	1.07
2017	7	7.55	0.93
2018	1	7.58	0.13
2019	4	7.60	0.53
2020	2	7.70	0.26



- VMT percent increases taken from KDOT historical data

TARGET 2: RATE OF VEHICLE FATALITIES P. 100M VMT

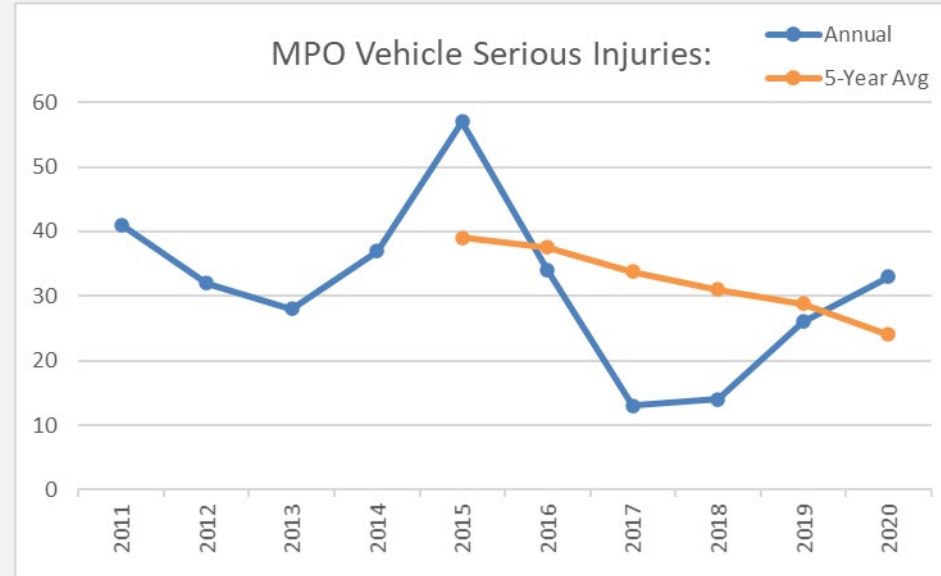
Year	Annual Fatalities	Fatality Rate p/100M VMT	5-Year Avg	Target
2014	2	0.28	0.79	-
2015	6	0.81	0.78	-
2016	8	1.07	0.83	-
2017	7	0.93	0.82	-
2018	1	0.13	0.64	0.7
2019	4	0.53	0.69	0.65
2020	2	0.26	0.58	0.6
2021	-	-	-	0.65
2022	-		-	0.65
2023	-		-	0.65
2024	-		-	0.65



On Target

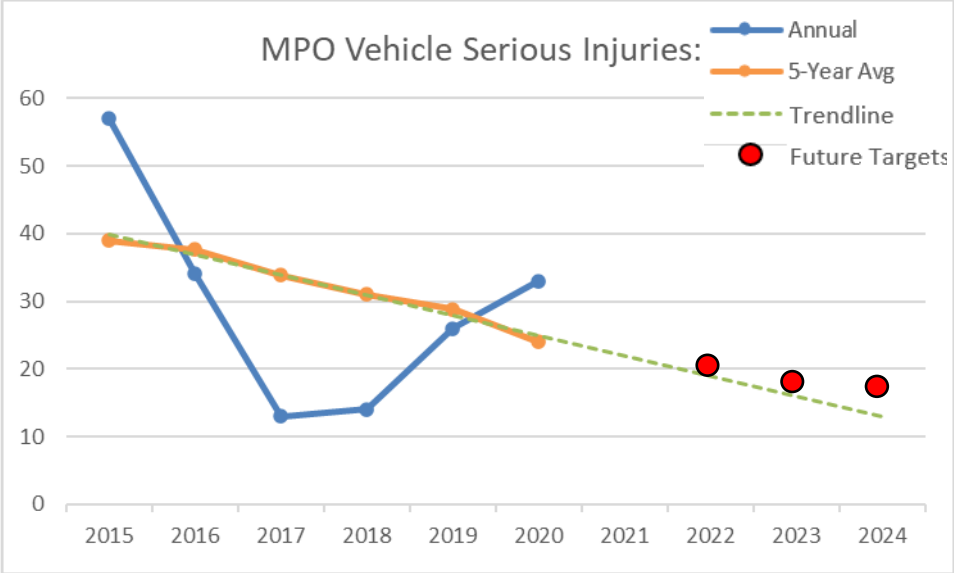
TARGET 3: # OF SERIOUS INJURIES

Year	Annual Serious Injuries	5-Year Avg
2011	41	-
2012	32	-
2013	28	-
2014	37	-
2015	57	39.0
2016	34	37.6
2017	13	33.8
2018	14	31.0
2019	26	28.8
2020	33	24.0



TARGET 3: # OF SERIOUS INJURIES

Year	Annual Serious Injuries	5-Year Avg	Target
2015	57	39.0	-
2016	34	37.6	-
2017	13	33.8	-
2018	14	31.0	32
2019	26	28.8	32
2020	33	24.0	32
2021	-	-	18
2022	-	-	20
2023	-	-	18
2024	-	-	17

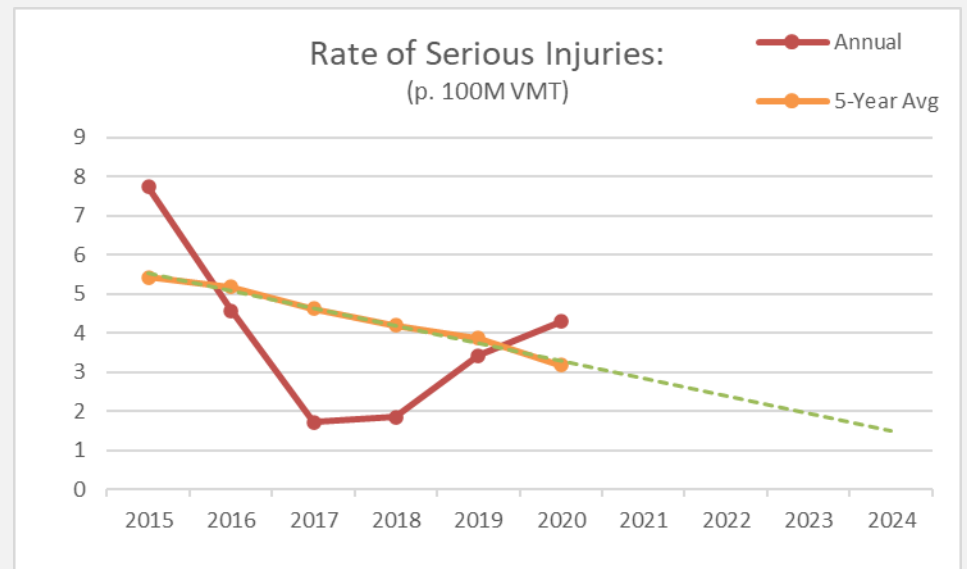
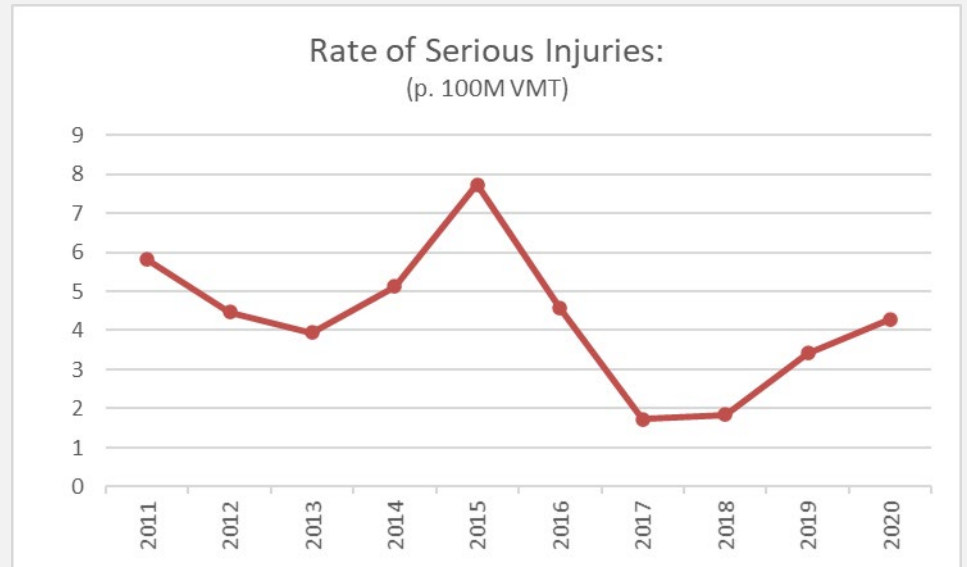


On Target



TARGET 4: RATE OF SERIOUS INJURIES P. 100M VMT


Year	Annual Serious Injuries	100M VMT	SI Rate p/100M VMT
2011	41	7.05	5.82
2012	32	7.16	4.47
2013	28	7.09	3.95
2014	37	7.21	5.13
2015	57	7.38	7.73
2016	34	7.45	4.56
2017	13	7.55	1.72
2018	14	7.58	1.85
2019	26	7.60	3.42
2020	33	7.70	4.29

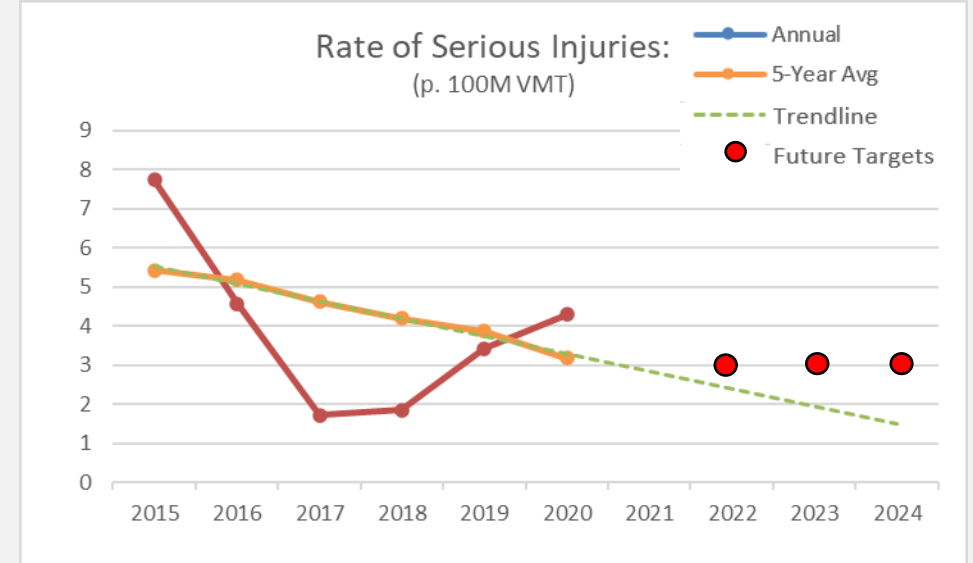


KDOT change is reporting criteria →

- 2005-2015 VMT was calculated with 2016 VMT then KDOT historical VMT tables to establish year-to-year changes.

TARGET 4: RATE OF SERIOUS INJURIES P. 100M VMT

Year	Annual Serious Injuries	SI Rate p/100M VMT	5-Year Avg	Target
2015	57	7.73	5.42	-
2016	34	4.56	5.17	-
2017	13	1.72	4.62	-
2018	14	1.85	4.20	4.4
2019	26	3.42	3.86	4.3
2020	33	4.29	3.17	4.2
2021	-	-	-	3
2022	-		-	3
2023	-		-	3
2024	-		-	3



On Target

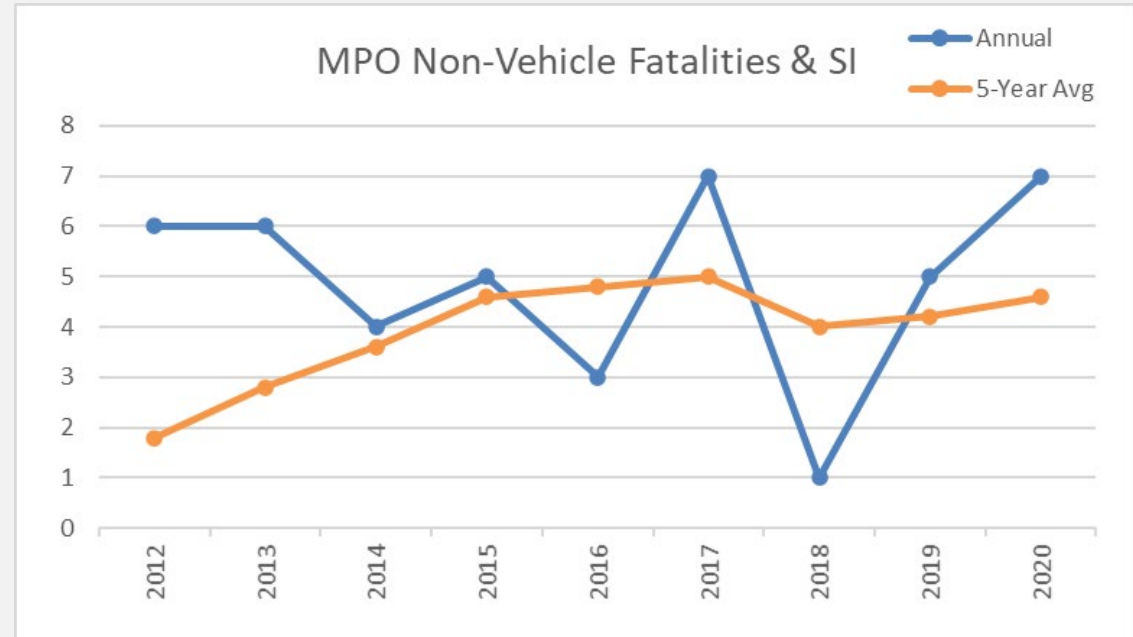
KDOT change is reporting criteria

Change in reporting of Injury Severity likely cause of drop from 2016 to 2017 onward

TARGET 5: # OF NON-VEHICULAR FATALITIES & SERIOUS INJURIES

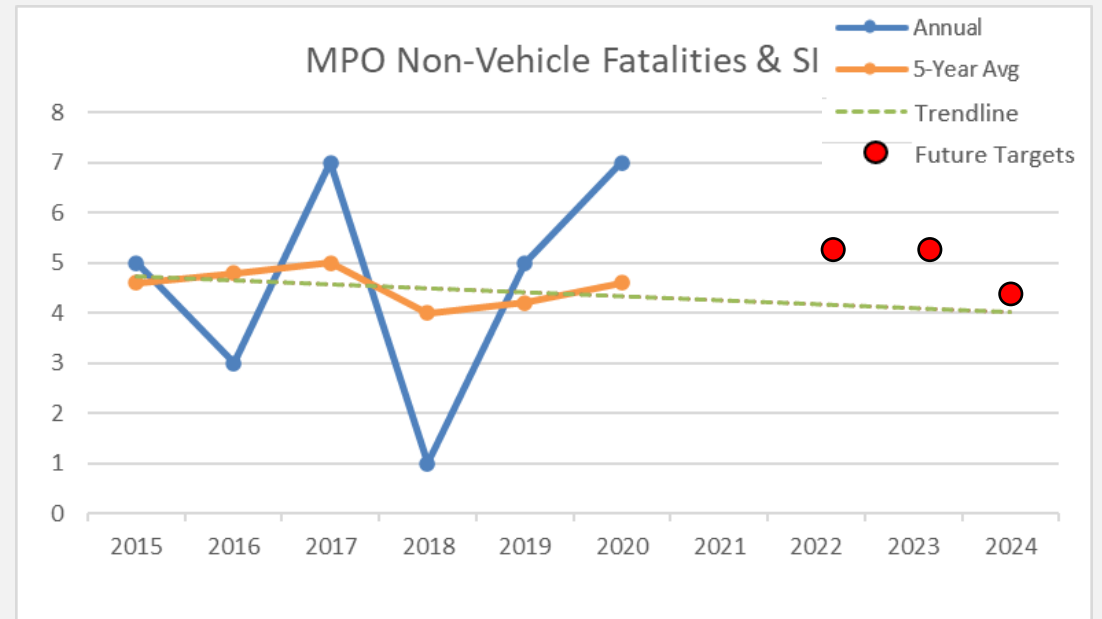
Year	Annual Fatalities	5-Year Avg
2012	6	1.8
2013	6	2.8
2014	4	3.6
2015	5	4.6
2016	3	4.8
2017	7	5
2018	1	4
2019	5	4.2
2020	7	4.6

KDOT data updated with improved bike-ped info








TARGET 5: # OF NON-VEHICULAR FATALITIES & SERIOUS INJURIES

Year	Annual Fatalities	5-Year Avg	Target
2015	5	4.6	-
2016	3	4.8	-
2017	7	5	-
2018	1	4	1
2019	5	4.2	0
2020	7	4.6	0
2021	-	-	5
2022	-	-	5
2023	-	-	5
2024	-	-	4



Off Target

TARGET SUMMARY

Performance Measure		2020 5-Year Avg	2020 Targets (set in 2018)	Future Targets
1	# of Fatalities	4.4	4  Off Target	2022: 4 2023: 4 2024: 4
2	Rate of Fatalities per 100 million VMT	0.58	0.60  On Target	2022: 0.65 2023: 0.65 2024: 0.65
3	# of Serious Injuries	24.0	32  On Target	2022: 20 2023: 18 2024: 17
4	Rate of Serious Injuries per 100 million VMT	3.2	4.2  On Target	2022: 3.0 2023: 3.0 2024: 3.0
5	# of Non-Vehicular Fatalities & Serious Injuries	4.6	0*  Off Target	2022: 5 2023: 5 2024: 4

*Analysis error